



**betap**<sup>®</sup>  
makes your brand

**Translate**

The Transmission Collection creates balance in an interior, it builds bridges between people, objects and surrounding, being discreet and subtle. Transmission is characterized by nine natural balanced colours, which give rise to a down-to-earth feeling, practical and realistic.

In office environments it takes care of calmness and comfort, which has huge impact on well-being of people. Nature as inspiration for designs generates an atmosphere of completion.

The collection includes two designs, Transform and Translate, in tile format in a choice of nine natural hues each design. You can emphasize certain areas and use different colours for zoning. The modularity of our collections offers uncountable options!









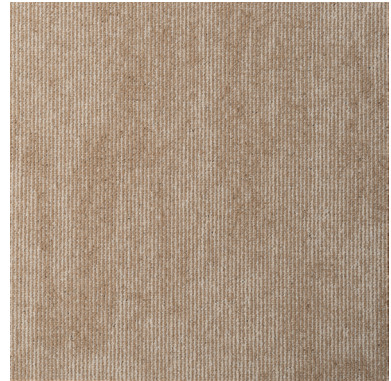








Translate - 74 Clay + 75 Concrete + 90 Peat



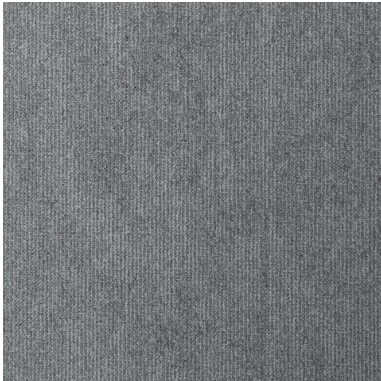
Translate - 62 Grain



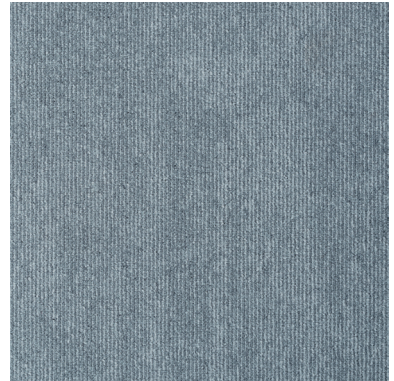
Translate - 64 Hemp



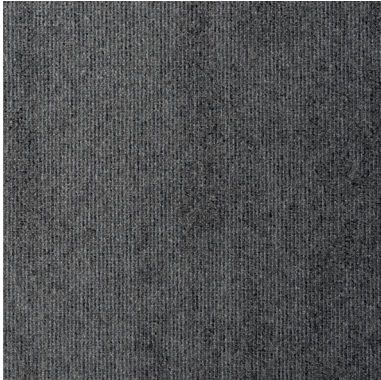
Translate - 73 Taupe



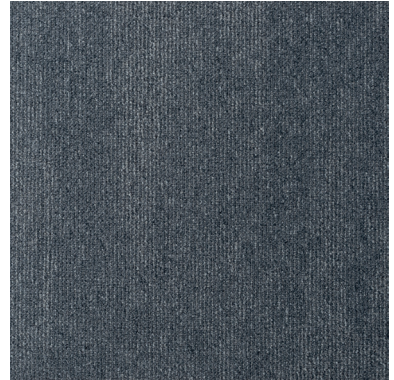
Translate - 74 Clay



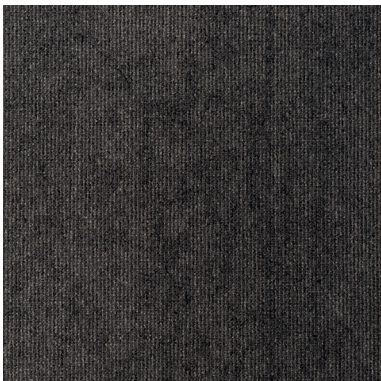
Translate - 72 Pewter



Translate - 75 Concrete



Translate - 76 Stone



Translate - 90 Peat



Translate - 78 Slate

## Preparation

The carpet tiles should be removed from their boxes and allowed to acclimatise at the temperature and humidity conditions for at least 24 hours before installation.

Where installation is over underfloor heating, the heating should be turned off at least 48 hours prior to installation and switched back on at low level at least 48 hours after installation, bringing the temperature up to its normal level gradually over seven days. A maximum surface temperature of the subfloor should not exceed 27 degrees.

There are two possibilities to secure the carpet tiles on the subfloor: by using an adhesive foil or putting carpet glue on the subfloor with a glue comb. Clean the floor with the vacuum cleaner.

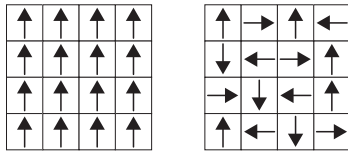
## What you need

- Measuring tape
- Carpet glue with glue comb or adhesive foil
- Crayon or pencil to draw lines on the floor
- Carpet knife or Stanley knife

## Positioning tiles

Most tiles are suitable for laying wall to wall as well as in patterns but before you start you have to locate the centre of the room. No matter which pattern you choose, we advise you to lay the tiles out first to see how they will fit. That gives you the possibility to divide the perimeter tiles equable.

Below we show you various patterns for installing the carpet tiles. The arrows on the back-side of the tile should correspond with the patterns below.



Now you have decided how to lay the tiles, you can start securing them. It is important that the tiles in the completed installation are correctly butted together. Continually checks should be carried out to ensure that the tiles are placed together with correct firmness, neither so loose as to allow gaps, not so tight as to compress the tiles and cause them to buckle.

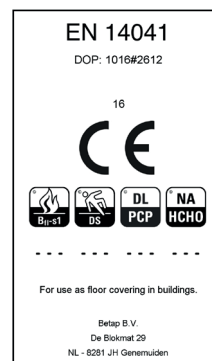
When placing the tiles, brush the face pile back from the tile edge and slide the tile into place ensuring that pile yarn is not trapped at the joint.

## Fixing the perimeter tiles

To cut the perimeter tiles, first place a tile face down under the last whole tile in the row and lay it tight against the wall, then mark the back of the tile where the previous tile end on it. Cut the new tile with a sharp carpet knife. It is usually best to cut the tile with several swipes of the knife, rather than trying to cut it all at once. Ensure that the pattern (see arrow on backside) of the perimeter tile is in the right direction before cutting the tile. To fit around door posts, architraves, etc. an accurate template can be made of stiff cardboard.

**TECHNICAL SPECIFICATION**

Manufacturing method	:	Design tufted
Pile type	:	Loop pile
Pile fibre	:	100% polyamide 6 solution-dyed
Gauge	:	1/10"
Pile weight	:	620 gr/m <sup>2</sup>
Pile height	:	2.7 - 5.2 mm
Total weight	:	4200 gr/m <sup>2</sup>
Total thickness	:	5.5 - 8.0 mm
Tuft density	:	177.200 m <sup>2</sup>
Tile size	:	50 x 50 cm
Backing	:	Polyflex
Tiles per box	:	20



**PERFORMANCE**

Use classification	:	23 + 33
Caster chair test	EN 985	: A, intensive use
Abrasion	EN 1963	: Pass
Vettermann test	EN 1471	: Pass
Dimensional stability	EN 986	: Pass
Thermal isolation	ISO 8302	: 0.0805 m <sup>2</sup> K/W
Sound absorption	ISO 140-8	: 26 dB
Luxury class	:	LC2
DOP-nr	:	1016-2612
Prodis-nr	:	In application

**ELECTROSTATIC**

Static loading	:	Anti-static
Walking test	EN 1815	: ≤ 0.02 KV
Horizontal resistance	ISO 1096 5	: 8 x 10. <sup>9</sup> Ohm
Vertical resistance	ISO 1096 5	: 4 x 10. <sup>9</sup> Ohm

**FLAMMABILITY**

Reaction to fire	EN ISO 9239-1	: Bfl-s1
Reaction to fire	BS 4790	: Medium radius of effect of ignition

**COLOUR FASTNESS**

Light	ISO 105 B02	: 7.0 - 8.0
Rubbing	ISO 105 x12	: 5.0
Water	ISO 105 E01	: 5.0

**MAINTENANCE**

Regular vacuum cleaning is essential. Spills and surface stains can be removed by sponging with a damp cloth, or for more resistant stains, with a mild detergent solution.



It is strongly recommended that a protecting mat i.e. keyhole mat or similar is used under castor chairs. Colours may vary from those shown on the sampling due to the manufacturing process. No claims will be considered as a result of improper application, installation of maintenance. Pile pressure marks shading and soiling are not manufacturing defects. all specifications are approx.



Betap Tufting BV  
Blokmat 29, 8281 JH Genemuiden  
The Netherlands  
**T** +31(0)38 386 10 60  
**E** centralmail@betap.com  
**I** www.betap.com



