

ShawContract®

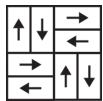
Jacquard Tile

Product Type	Carpet Tile
Collection	Suited
Style Number	5T280
Construction	Multi-Level Pattern Cut/Loop
Fiber	Eco Solution Q® Nylon
Dye Method	100% Solution Dyed
Primary Backing	Synthetic
Secondary Backing	Ecworx® Tile
Protective Treatments	SSP® Shaw Soil Protection
Recommended Adhesive	Shaw 5000, Shaw 5100, Shaw 4151, LokDots, LokWorx, Shaw 3800 or Shaw 5036

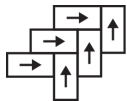


	u.s.	metric
Product Size	18 in x 36 in	45.7 cm x 91.4 cm
Area per Carton	45 ft²	4.18 m²
Pieces per Carton	10 pcs	
Gauge	1/10 in	39.4 per 10 cm
Stitches	9.0 per in	36.5 per 10 cm
Finished Pile Thickness	0.151 in	3.84 mm
Average Density	6675 oz/yd³	0.247 g/cm³
Kilotex		8.59
Total Thickness	0.339 in	8.61 mm
Tufted Weight	28 oz/yd²	949.4 g/m²

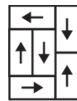
Recommended Installation Method



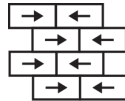
Basketweave



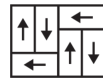
Herringbone



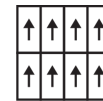
Boxed In



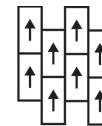
Brick



Half Basketweave



Monolithic



Ashlar

Coordinating Products

Carpet Tile: **Textile Tile, Check Tile, Houndstooth Tile**

Broadloom: **Textile**

Performance + Testing

Antimicrobial Assessment	Passes (AATCC-174) (When installed using Shaw 5036 adhesive)
Pill Test	Pass
NBS Smoke	Less Than 450
Electrostatic Propensity	Less Than 3.5 kv
CRI Green Label Plus (GLP)	USA GLP9968 China GLP1263
ADA Compliance	>0.6, meets the recommended static coefficient of friction for ADA walking surfaces and accessible routes***

Warranties

Lifetime Commercial Limited Warranty

Corporate Headquarters +1 800 257 7429 | +1 706 532 7984 | Atlanta +1 404 853 7429 | Bengaluru +91 80 6773 0202 | Beijing +86 10 6568 588 | Chicago +1 312 467 1331 | Dubai +971 4 584 6956 | Hong Kong +852 2623 0371 | Latin America (Miami) +1 305 827 5912 | London +44 207 961 4120 | Los Angeles +1 800 233 1614 | Melbourne +61 3 9939 8543 | Mexico City +55 5010 7600 | Mumbai +91 22 6284 5050 | Nantong +86 400 800 7429 | New York +1 212 953 7429 | Paris +33 (0) 1 81 22 44 39 | San Francisco +1 415 955 1920 | Santiago +562 2431 5000 x 550 | São Paulo +55 11 3071 1702 | Shanghai +86 21 3338 4000 | Singapore +65 6733 1811 | Sydney +1 800 556 302

© 2020 Shaw Industries Group, Inc., a Berkshire Hathaway Company
September 16, 2020

1 of 2

Product Transparency

Shaw Contract is dedicated to providing clients with a building chemistry that's safe and dependable. Working together, we will help you meet your goals as they pertain to material health. EcoWorx products with Eco Solution Q nylon are Cradle to Cradle Certified™ Silver and assessed for impacts on human health and the environment. This product can be recycled. When it's time to replace, we can collect and recycle it through our Environmental Guarantee.*

Attributes + Certifications

Cradle to Cradle Certified™

Health Product Declaration (HPD)

Environmental Product Declaration (EPD)

Living Building Challenge (LBC)

Declare

NSF 140

CRI Green Label Plus (GLP)

Building Research Establishment (BRE)

Good Environmental Choice Australia (GECA)

Singapore Green Label

CE Marking (EN 14041)

Environmental Guarantee*

Total Recycled Content

Product Packaging

Country of Origin**

Silver Level (Version 3.1)

1,000 ppm Disclosure

3rd Party Certified in Accordance with ISO 14044, ISO 14025 & EN15804

Free of Red List Chemicals

LBC Compliant USA | China

Gold

USA GLP9968 | China GLP1263

Certified

Certified

Certified

3rd Party Certified

Free Pickup & Delivery Available North America

40% (Post Industrial 40% | Post Consumer 0%)

100% Recyclable

USA & China

LEED Contribution Credit

MR Credit: Building Product Disclosure and Optimization
Environmental Product Declarations - Option 1: Environmental Product Declaration (EPD)

MR Credit: Building Product Disclosure and Optimization
Material Ingredients - Option 1: Material Ingredient Reporting

MR Credit: Building Product Disclosure and Optimization
Material Ingredients - Option 2: Material Ingredient Optimization

MR Credit: Building Product Disclosure and Optimization
Sourcing of Raw Materials - Option 2: Leadership Extraction Practices

EQ Credit: Low Emitting Materials
Option 1: Product Category Calculations

MR Credit: Interiors Life-Cycle Impact Reduction
Option 3: Design for Flexibility

3rd Party Certified in Accordance with ISO 14044, ISO 14025 & EN15804

HPD (Version 2.1) or C2C Silver Level (Version 3.1)

C2C Silver Level (Version 3.1)

Environmental Guarantee: Free Pickup & Delivery Available North America

Green Label Plus Certification: GLP9968

Ecoworx Tile with Lokdots Installation System

Additional Information

* To learn more about the recyclability of our products and our Environmental Guarantee, please visit shawcontract.com/sustainability.

**Meets or exceeds all local and national regulations in country of manufacture.

***This carpet is manufactured to be ADA compliant, but to be fully ADA compliant, the end-user must ensure the carpet is adhered to the floor and installed as outlined in the ADA standards.

Specifications are subject to nominal manufacturing variance. Material supply and/or manufacturing processes may necessitate changes without notice.

This product is an exclusive design and may not be duplicated in any manner. Use of this design in the creation of another product design is also strictly prohibited.

Visit shawcontract.com/testing for more information.



Corporate Headquarters +1 800 257 7429 | +1 706 532 7984 | Atlanta +1 404 853 7429 | Bengaluru +91 80 6773 0202 | Beijing +86 10 6568 588 | Chicago +1 312 467 1331 | Dubai +971 4 584 6956 | Hong Kong +852 2623 0371 | Latin America (Miami) +1 305 827 5912 | London +44 207 961 4120 | Los Angeles +1 800 233 1614 | Melbourne +61 3 9939 8543 | Mexico City +55 5010 7600 | Mumbai +91 22 6284 5050 | Nantong +86 400 800 7429 | New York +1 212 953 7429 | Paris +33 (0) 1 81 22 44 39 | San Francisco +1 415 955 1920 | Santiago +562 2431 5000 x550 | São Paulo +55 11 3071 1702 | Shanghai +86 21 3338 4000 | Singapore +65 6733 1811 | Sydney +1 800 556 302

© 2020 Shaw Industries Group, Inc., a Berkshire Hathaway Company
September 16, 2020

2 of 2