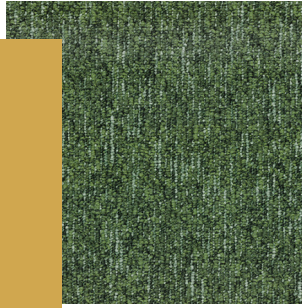


BLOQ

creative
carpet tiles



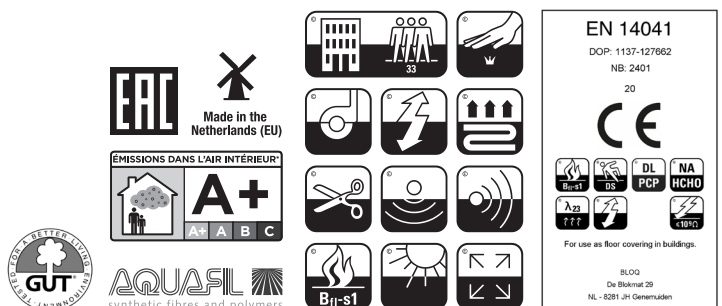
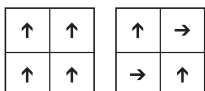
THE BINARY FLOW

SPECIFICATIONS

TYPE OF MANUFACTURE	Tufted Patterned Loop Pile 1/10"
	ISO 2424
PILE FIBER COMPOSITION	100% Polyamide 6
	ISO 2424 Solution Dyed Nylon made by Aquafil
SECONDARY BACKING	Bitback, Modified Bitumen
	ISO 2424 70% Recycled Content
DIMENSION	50 x 50 cm
	EN ISO 24342
PILE WEIGHT	650 g/m ²
	ISO 8543
SURFACE PILE WEIGHT	380 g/m ²
	ISO 8543
TOTAL WEIGHT	4 400 g/m ²
	ISO 8543
TOTAL THICKNESS	6.9 mm
	ISO 1765
PILE HEIGHT	3.8 mm
	ISO 1766
PILE DENSITY	0.100 g/m ³
	ISO 8543
NUMBER OF TUFTS	152 000 /m ²
	ISO 1763
DIMENSIONAL STABILITY	≤ 0.2%
	ISO 2551
NUMBER OF COLOURS	18
PACKAGING	Box: 20 tiles / 5 m ² Pallet: 200 m ²

PERFORMANCE

CLASSIFICATION	33
	EN 1307
LUXURY RATING	LC1
	EN 1307
CASTOR CHAIR RATING	A: Intensive use
	EN 985
FIRE CLASSIFICATION	B _{fl} -s1
	EN 13501-1
IMPACT SOUND INSULATION	ΔL _w : 26 dB
	EN ISO 10140-3
SOUND ABSORPTION	Frequency Hz 125 250 500 1000 2000 4000
	EN ISO 354 α _s 0.01 0.03 0.08 0.22 0.32 0.39
NOISE REDUCTION	α _w : 0.20
	EN ISO 354
PERMANENT ANTISTATIC	≤ 2 kV
	ISO 6356
TRANSVERSAL RESISTANCE	≤ 1 X 10 ⁹ Ohm
	ISO 10965
THERMAL RESISTANCE	0.080 m ² K/W
	ISO 8302
COLOUR FASTNESS TO LIGHT	≥ 7
	EN ISO 105-B02
COLOUR FASTNESS TO WATER	≥ 4
	EN ISO 105-E01
RUBBING FASTNESS	≥ 4
	EN ISO 105-X12
GUT N° PRODIS	63C72CE9



All rights reserved to alter technical specifications.