

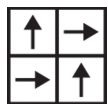
## Structure Tile

Product Type	<b>Carpet Tile</b>
Collection	<b>Simply By Nature</b>
Style Number	<b>5T297</b>
Construction	<b>Multi-Level Pattern Loop</b>
Fiber	<b>Eco Solution Q® Nylon</b>
Dye Method	<b>100% Solution Dyed</b>
Primary Backing	<b>Synthetic</b>
Secondary Backing	<b>Strataworx® Tile</b>
Protective Treatments	<b>SSP® Shaw Soil Protection</b>
Recommended Adhesive	<b>Shaw 5000, Shaw 5100, Shaw 4151, Shaw 3800 or Shaw 5036</b>

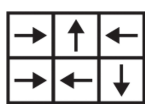
	u.s.	metric
Product Size	<b>24 in x 24 in</b>	<b>61 cm x 61 cm</b>
Area per Carton	<b>80 ft²</b>	<b>7.43 m²</b>
Pieces per Carton	<b>20 pcs</b>	
Gauge	<b>1/10 in</b>	<b>39.4 per 10 cm</b>
Stitches	<b>10.0 per in</b>	<b>40.5 per 10 cm</b>
Finished Pile Thickness	<b>0.121 in</b>	<b>3.07 mm</b>
Average Density	<b>4760 oz/yd³</b>	<b>0.176 g/cm³</b>
Kilotex		<b>8.76</b>
Total Thickness	<b>0.245 in</b>	<b>6.22 mm</b>
Tufted Weight	<b>16 oz/yd²</b>	<b>542.5 g/m²</b>



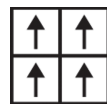
## Recommended Installation Method



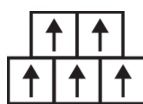
**Quarter Turn**



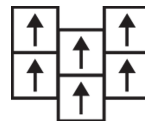
**Random**



**Monolithic**



**Brick**



**Ashlar**

## Coordinating Products

Carpet Tile: **Arrange Tile, Array Tile, Offset Tile**

Broadloom: **Amend, Accord**

## Performance + Testing

Antimicrobial Assessment	<b>Passes (AATCC-174) (When installed using Shaw 5036 adhesive)</b>
Pill Test	<b>Pass</b>
Radiant Panel	<b>Class I</b>
NBS Smoke	<b>Less Than 450</b>
Electrostatic Propensity	<b>Less Than 3.5 kv</b>
CRI Green Label Plus (GLP)	<b>GLP2671</b>
ADA Compliance	<b>&gt;0.6, meets the recommended static coefficient of friction for ADA walking surfaces and accessible routes***</b>

Test Reports may be included or listed by the manufacturing/inventory style number as opposed to the noted selling style number.

## Warranties

**15 Year Commercial Limited Warranty**

Corporate Headquarters +1 800 257 7429 | +1 706 532 7984 | Atlanta +1 404 853 7429 | Bengaluru +91 80 6773 0202 | Beijing +86 10 6568 588 | Chicago +1 312 467 1331 | Dubai +971 4 584 6956 | Hong Kong +852 2623 0371 | Latin America (Miami) +1 305 827 5912 | London +44 207 961 4120 | Los Angeles +1 800 233 1614 | Melbourne +61 3 9939 8543 | Mexico City +55 5010 7600 | Mumbai +91 22 6284 5050 | Nantong +86 400 800 7429 | New York +1 212 953 7429 | Paris +33 (0) 1 81 22 44 39 | San Francisco +1 415 955 1920 | Santiago +562 2431 5000 x 550 | São Paulo +55 11 3071 1702 | Shanghai +86 21 3338 4000 | Singapore +65 6733 1811 | Sydney +1 800 556 302

© 2021 Shaw Industries Group, Inc., a Berkshire Hathaway Company  
October 13, 2021

1 of 2

## Attributes + Certifications

Cradle to Cradle Certified®

Health Product Declaration (HPD)

Environmental Product Declaration (EPD)

Living Building Challenge (LBC)

Declare

NSF 140

CRI Green Label Plus (GLP)

Singapore Green Label

GSA

Environmental Guarantee\*

Total Recycled Content

Country of Origin\*\*

**Silver Level (Version 3.1)**

**1,000 ppm Disclosure**

**3rd Party Certified in Accordance with ISO 14044, ISO 14025 & EN15804**

**Free of Red List Chemicals**

**LBC Compliant**

**Gold**

**GLP2671**

**Certified**

**Approved**

**Pickup & Delivery Available in Americas**

**26% (Pre-Consumer 24% | Post-Consumer 2%)**

**USA**

## LEED Contribution Credit

MR Credit: Building Product Disclosure and Optimization

Material Ingredients - Option 1: Material Ingredient Reporting

MR Credit: Building Product Disclosure and Optimization

Material Ingredients - Option 2: Material Ingredient Optimization

EQ Credit: Low Emitting Materials

Option 1: Product Category Calculations

**HPD (Version 2.1) or C2C Silver Level (Version 3.1)**

**C2C Silver Level (Version 3.1)**

**Green Label Plus Certification: GLP2671**

## Additional Information

\* To learn more about the recyclability of our products and our Environmental Guarantee, please visit [shawcontract.com/sustainability](https://shawcontract.com/sustainability).

\*\*Meets or exceeds all local and national regulations in country of manufacture.

\*\*\*This carpet is manufactured to be ADA compliant, but to be fully ADA compliant, the end-user must ensure the carpet is adhered to the floor and installed as outlined in the ADA standards.

[Installation Guidelines](#)

[Maintenance Guidelines](#)

Specifications are subject to nominal manufacturing variance. Material supply and/or manufacturing processes may necessitate changes without notice.

This product is an exclusive design and may not be duplicated in any manner. Use of this design in the creation of another product design is also strictly prohibited.

Visit [shawcontract.com/testing](https://shawcontract.com/testing) for more information.



Corporate Headquarters +1 800 257 7429 | +1 706 532 7984 | Atlanta +1 404 853 7429 | Bengaluru +91 80 6773 0202 | Beijing +86 10 6568 588 | Chicago +1 312 467 1331 | Dubai +971 4 584 6956 | Hong Kong +852 2623 0371 | Latin America (Miami) +1 305 827 5912 | London +44 207 961 4120 | Los Angeles +1 800 233 1614 | Melbourne +61 3 9939 8543 | Mexico City +55 5010 7600 | Mumbai +91 22 6284 5050 | Nantong +86 400 800 7429 | New York +1 212 953 7429 | Paris +33 (0) 1 81 22 44 39 | San Francisco +1 415 955 1920 | Santiago +562 2431 5000 x 550 | São Paulo +55 11 3071 1702 | Shanghai +86 21 3338 4000 | Singapore +65 6733 1811 | Sydney +1 800 556 302