

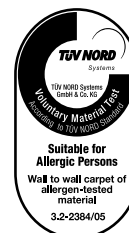
# E-BLITZ

## ESSENTIAL COLLECTION

HIGH  
PERFORMANCE  
COLLECTION

CONSTRUCTION STRUCTURE STRUKTUR STRUCTUUR	Tufting 1/10" loop pile Tufté 1/10" bouclé Getuftet 1/10" Schlinge Getuft 1/10" lusserpool	CASTOR CHAIR SUITABILITY CHAISE À ROULETTES STUHLROLLENEIGNUNG ROLSTOELGESCHIKTHEID	EN 985 A: intensive use
PILE MATERIAL COMPOSITION DU VELOURS POLMATERIAL POOLMATERIAAL	100% PA 6 solution dyed	STAIR SUITABILITY ESCALIERS TREPPENEIGNUNG TRAPPENGESCHIKTHEID	EN 1963 A: intensive use
PRIMARY BACKING SUPPORT TRÄGERMATERIAL TUFTDOEK	Non woven PES Non tissé PES Vlies, PES Vilt, PES	PERMANENTLY ANTISTATIC ANTISTATIQUE PERMANENT PERMANENT ANTISTATISCH PERMANENT ANTISTATISCH	ISO 6356 < 2 kV
SECONDARY BACKING DOSSIER RÜCKEN TAPIJTRUG	Action back	IMPACT NOISE RATING ISOLATION PHONIQUE TRITTSCHALLVERBESSERUNG GELUIDSISOLATIE	ISO 140-8 25 dB ΔLw
PILE WEIGHT POIDS DU VELOURS POLEINSATZGEWICHT POOLGEWICHT	± 540 gr/m <sup>2</sup>	SOUND ABSORPTION ABSORPTION PHONIQUE SCHALLABSORPTIONSGRAD GELUIDSABSORPTIE	ISO 354 0,15 aw
TOTAL WEIGHT POIDS TOTAL GESAMTGEWICHT TOTAAL GEWICHT	± 1.800 gr/m <sup>2</sup>	THERMAL RESISTANCE RÉSISTANCE THERMIQUE WÄRMEDURCHLASSWIDERSTAND WARMTEDOORLAATWEERSTAND	ISO 8302 0,07 m <sup>2</sup> K/W
PILE HEIGHT EPAISSEUR DU VELOURS POLHÖHE POOLHOOGTE	± 2,9 mm	FASTNESS TO LIGHT SOLIDITÉ A LA LUMIÈRE LICHTECHTHEIT LICHTECHTHEID	ISO 105-B02 ≥ 7
TOTAL HEIGHT EPAISSEUR TOTALE GESAMTHÖHE TOTAAL HOOGTE	± 5,4 mm	COLOUR FASTNESS TO WATER SOLIDITÉ À L'EAU WASSERECHTHEIT WATERECHTHEID	EN ISO 105-E01 ≥ 4-5
TUFT DENSITY NOMBRE DE POINTS NOPPENZAHL AANTAL PUNTEN	± 180.000/m <sup>2</sup>	RUBBING FASTNESS SOLIDITÉ AU FROTTEMENT REIBECHTHEIT WRIJFECHTHEID	EN ISO 105-X12 ≥ 4
PILE DENSITY DENSITÉ DU VELOURS POLROHDICHTHEIT POOLDICHTHEID	± 0,117 g/cm <sup>3</sup>	FIRE RESISTANCE COMPORTEMENT AU FEU BRENNVERHALTEN BRANDGEDRAG	EN 13501-1 Bfl-s1 if glued
CLASSIFICATION CLASSEMENT KLASSIFIKATION CLASSIFICATIE	EN 1307 33 - LC1	WIDTH LARGEUR BREITE BREEDTE	EN ISO 3018 ± 400 cm
PRODIS / GUT	D00EC6DF		

itc®

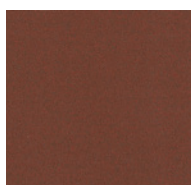


EN 14041 <b>CE</b>
20
ITC CO BV Kanegemstraat 15 - BE 8700 Tielt
DOP: 1011#IE0ABV Textile Floor Covering EN1307 Notified Body 2401
myitc-carpets.com

# E-BLITZ

## ESSENTIAL COLLECTION

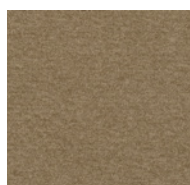
ALL-PURPOSE  
GENTLE COLOR BLEND



14 / SDN



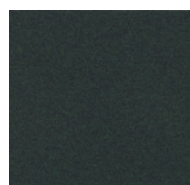
41 / SDN



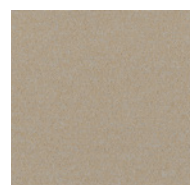
134 / SDN



39 / SDN



27 / SDN



38 / SDN



34 / SDN



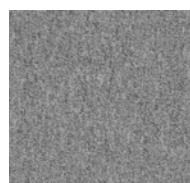
32 / SDN



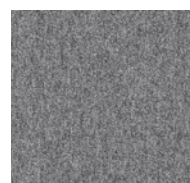
46 / SDN



94 / SDN



195 / SDN



95 / SDN



96 / SDN



99 / SDN



78 / SDN



76 / SDN



ITC CO BV - Kanegemstraat 15 - B-8700 Tielt - Belgium - [hello@itc-carpets.com](mailto:hello@itc-carpets.com) - [itc-carpets.com](http://itc-carpets.com)